



Our Vision
Te Pikinga -
Onwards and Upwards
Kia mau ki to mana – Hold
Steadfast to that which is yours



Tainui Full Primary School

TERM 3 WEEK 3 Rāmere 7th Here-turi-kōkā 2020
Quote Be the reason someone smiles today ☺



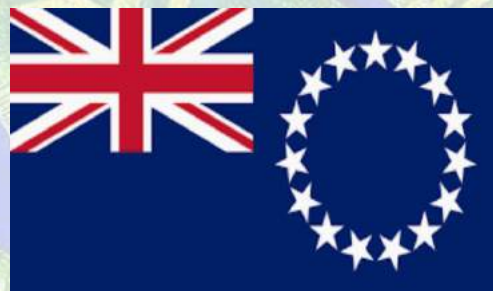
2020 Newsletter 10
www.tainuifullprimary.school.nz
Phone: 078869860, 0274454516
principal@tainuifullprimary.school.nz
Tainui Street, Tokoroa



Kia ora, Kia orana, Talofa, Greetings

CHICKEN POX IS PRESENT IN SCHOOL IN THE JUNIOR AREA

Cook Island Language Week 3rd-7th August



Nūmero		Te au kara		
1	ta'i	auka	hengenga	muomua
2	rua	matu	mākara	vaio au
3	toru	parani	haha	haha
4	ʻā	te au u	toka koro	korokoro
5	rima			
6	ono			
7	ʻitu			
8	varu			
9	iva			
10	ta'i nga'uru			



Kia orana kotou katoatoa This week here at Tainui Full Primary School we celebrated Cook Island language week. On Wednesday the 5th August we had island wear day and look how amazing all our Tamariki look.

We also had the absolute pleasure of having Porinetia faātasi from Forest View High School come into school and perform for us you guys were absolutely amazing.

On Friday 7th the staff here enjoyed an amazing Cook Island Kai thank you so much to all those involved ☺



Automatic Payments

Just a little update for those of you with automatic payments. As the school uniform is now being sold down at the Tokoroa Warehouse and school levies are no longer, we are asking that automatic payments be stopped. The only payments that we will be charging are Sports and After School care fees. If you have any questions please contact the office.

...Enrolment Scheme...

The Tainui Full Primary School Board of Trustees is advising that the Board has been working with the Ministry of Education and has agreed to develop a draft enrolment scheme 'school zone.' The Ministry agrees that there is likely to continue to be over-crowding at Tainui and continued pressure on facilities should the roll continue to grow. We are very close to our capacity. Part of this process is that we are required to consult with our students, parents, local community, parents of prospective students of Tainui and with the Boards of other local schools and ECEs that may be affected by the school zone.

What is an enrolment scheme?

An Enrolment Scheme is a means of preventing overcrowding at a school, ensuring fair and transparent processes are used to determine enrolment eligibility, and enables the Ministry of Education to make best use of the current schools in the surrounding area. Each enrolment scheme must contain a home zone with clearly defined boundaries.

A school enrolment scheme gives students who live in the home zone a guarantee that they can go to that school. The Enrolment Scheme also details the way in which students may enrol at a Special Programme run by the school, and the way in which out-of-zone applications will be balloted.

Nga pepe Manu-Transition to school program

Nga Pepe Manu-Transition to school program will resume as from the 26th of May. However due to covid-19 we have a slightly different protocol. All parents and children must sign in at the office before any Nga Pepe Manu visit and only 1 person per child is allowed to accompany them onto school grounds this includes younger siblings or other children. We understand this might cause issues for some but please understand that we have put these measures in place to keep all our tamariki and staff safe.

Tuesday 9.00-11.30 for their first 3 visits
Tuesday 9.00-12.30 for remainder of visits

Correct Uniform

It is important that all our Tamariki are wearing the correct school uniform to school every day.
See photos for reference >>>

For Girls: Wearing plain black stockings under Skort's is fine but no tights or different colored attire.

For both gender: Plain black school pants are available during winter from here at school or the warehouse Tokoroa **NO** track pants, jeans, cargo pants or tights to be worn.

School Polo fleece & Jackets **ONLY** NO hoodies or non-school uniform to be worn

Plain black shoes **ONLY** as footwear.

If anyone is having difficulty accessing correct uniform please give us a call at the office and we will see what we can do ☺



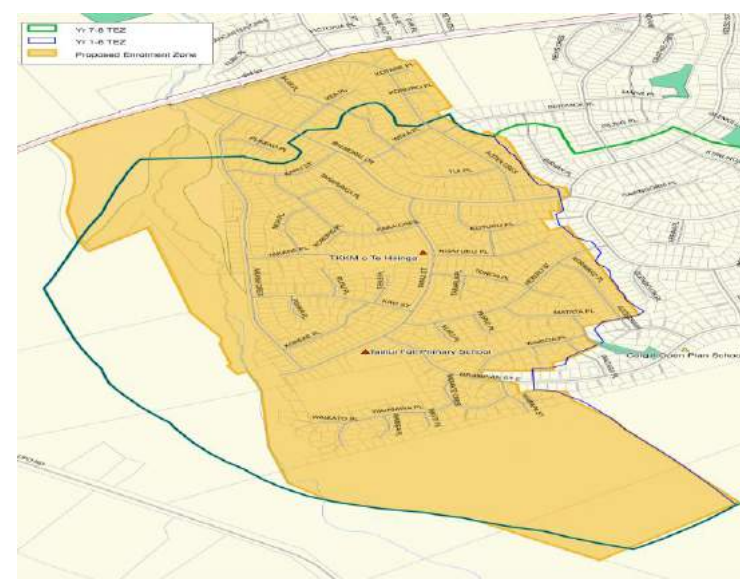
Week 3 Term 3: Spotlight on Te Taihu!

..Student voice..

Quade is 5 years old. He likes learning about letters and the alphabet. Quade likes to learn how to spell brand new words. Soon after he told me how much he likes our brand new playground. His most favourite part is the flying fox and how it zooms down the hill and how you go flying when you hit the bottom!

I asked Moira-Riley how old she was, she said that she is six years old. I asked her what she was learning about and she replied with, "I am learning about letters of the alphabet and counting to 100." Moira enjoys the new playground because of the swings. She likes it because you can lie down and when people push you it feels like you are 'legit FLYING!'

Reports written by Heavenly Glassie
(Writer's Club)



Like us on Facebook



Follow us on Twitter #TeamTainui

